



# Karen Frankel - Collage Glass Tutorial

## Firing Schedules

I used the basic firing schedules are from Bullseye technical information. I have an Evenheat kiln and the temp in red worked so I did not need to adjust.

For up to 50cm square with an even thickness of 6mm.

### Super Bubble Squeeze

Use this firing to avoid unwanted bubbles.

Runtime: 12hrs	Rate - Degrees/hr	Process Temperature	Hold – Soak
Segment 1	222°C/hr ( 400°F )	→ 600°C (1112°F)	30 min
Segment 2	111°C/hr ( 200°F )	→ 677°C (1250°F)	60 min
Segment 3	333°C/hr ( 600°F )	→ 804°C (1480°F)	10 min
Segment 4	999°C/hr ( 999°F )	→ 482°C (900°F)	60 min
Segment 5	83°C/hr ( 150°F )	→ 371°C (700°F)	End

### Basic Slump\*

For non-complex slumping moulds.

\*See our website for individual mould schedules.

Runtime: 12hrs	Rate - Degrees/hr	Process Temperature	Hold – Soak
Segment 1	167°C/hr (300°F)	→ 640°C (1184°F)	10 min (variable)
Segment 2	999°C/hr (999°F)	→ 482°C (900°F)	60 min
Segment 3	56°C/hr (100°F)	→ 371°C (700°F)	End

A further note:

Since I made the video I've been encouraged to use a tack-fuse rather than a full fuse so that single 3mm glass doesn't shrink on the edges which then gets wasted!



**Glass**

Red DR Fusible



Egyptian Blue powder part sheet



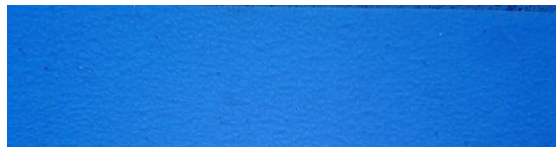
Clear Tekta



Deep Royal Blue DR Fusible



True Blue?



Amethyst

